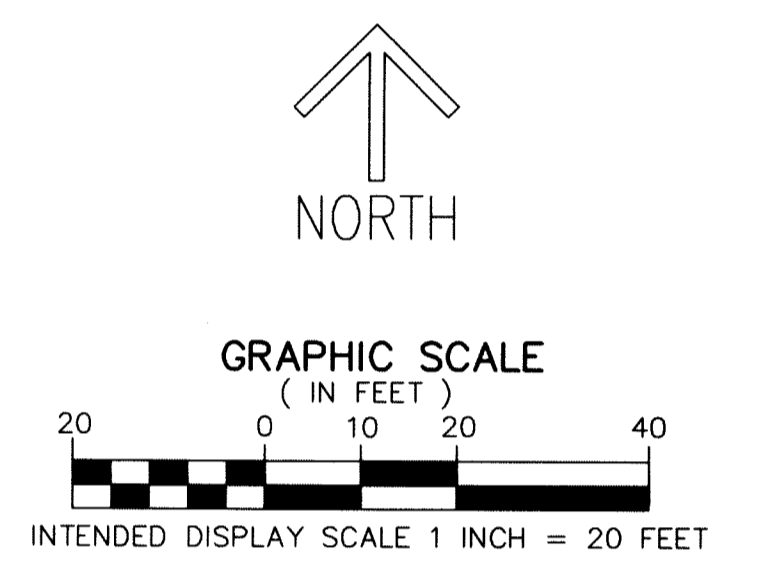
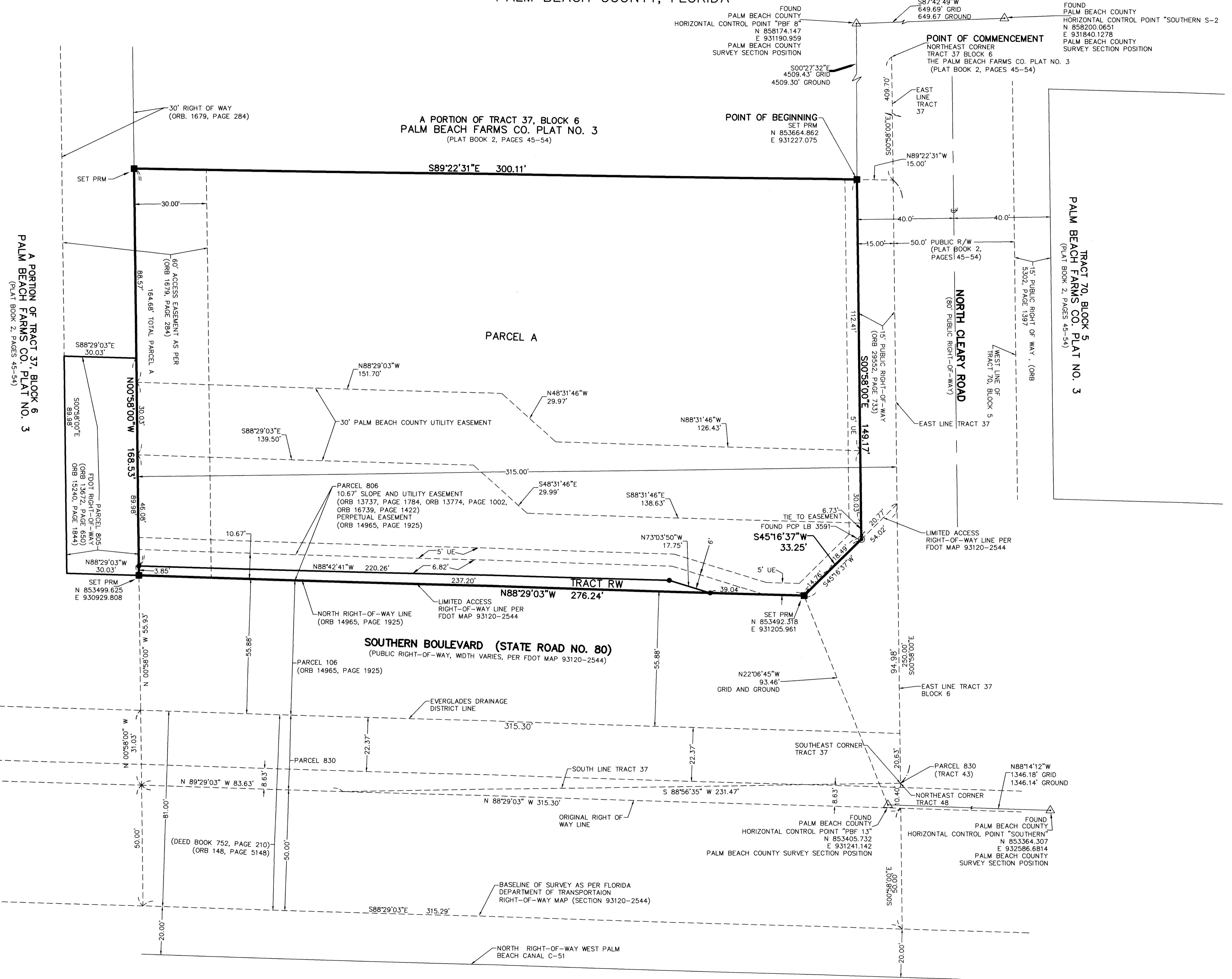


CLEARY STATION

A REPLAT OF A PORTION OF TRACT 37, BLOCK 6, THE PALM BEACH FARMS COMPANY PLAT NO. 3, AS RECORDED IN PLAT BOOK 2, PAGES 45 THROUGH 54 THE PUBLIC RECORDS OF PALM BEACH COUNTY, FLORIDA, LYING IN SECTION 33, TOWNSHIP 43 SOUTH, RANGE 42 EAST, PALM BEACH COUNTY, FLORIDA



THIS INSTRUMENT PREPARED BY
 DAVID P. LINDLEY
 OF
CAULFIELD and WHEELER, INC.
 SURVEYORS - ENGINEERS - PLANNERS
 7900 GLADES ROAD, SUITE 100
 BOCA RATON, FLORIDA 33434 - (561)392-1991
 CERTIFICATE OF AUTHORIZATION NO. LB3591

LEGEND/ABBREVIATIONS

- ⊕ - CENTERLINE
- E - EASTING (WHEN USED WITH COORDINATES)
- FDOT - FLORIDA DEPARTMENT OF TRANSPORTATION
- LB - LICENSED BUSINESS
- N - NORTHING (WHEN USED WITH COORDINATES)
- NO - DENOTES NUMBER
- ORB - OFFICIAL RECORD BOOK
- R/W - RIGHT-OF-WAY
- UE - UTILITY EASEMENT
- PRM - DENOTES PERMANENT REFERENCE MONUMENT
4" x 4" x 24" CONCRETE MONUMENT WITH ALUMINUM DISK STAMPED "C&W PRM LB3591"
- - DENOTES PERMANENT CONTROL POINT, PK NAIL/BRASS DISK STAMPED PCP LB3591 UNLESS OTHERWISE NOTED
- △ - PALM BEACH COUNTY CONTROL POINT
- - DENOTES SET 5/8" IRON ROD WITH PLASTIC CAP ENGRAVED LB3591

NOTES COORDINATES, BEARINGS AND DISTANCES

COORDINATES SHOWN ARE GRID
 DATUM = NAD 83 (90/98 ADJUSTMENT)
 ZONE = FLORIDA EAST
 LINEAR UNIT = US SURVEY FEET
 COORDINATE SYSTEM 1983 STATE PLANE
 TRANSVERSE MERCATOR PROJECTION
 ALL DISTANCES ARE GROUND
 SCALE FACTOR = 1.000028781
 GROUND DISTANCE X SCALE FACTOR = GRID DISTANCE
 BEARINGS AS SHOWN HEREON ARE GRID DATUM,
 NAD 83 (90/98 ADJUSTMENT), FLORIDA EAST ZONE.